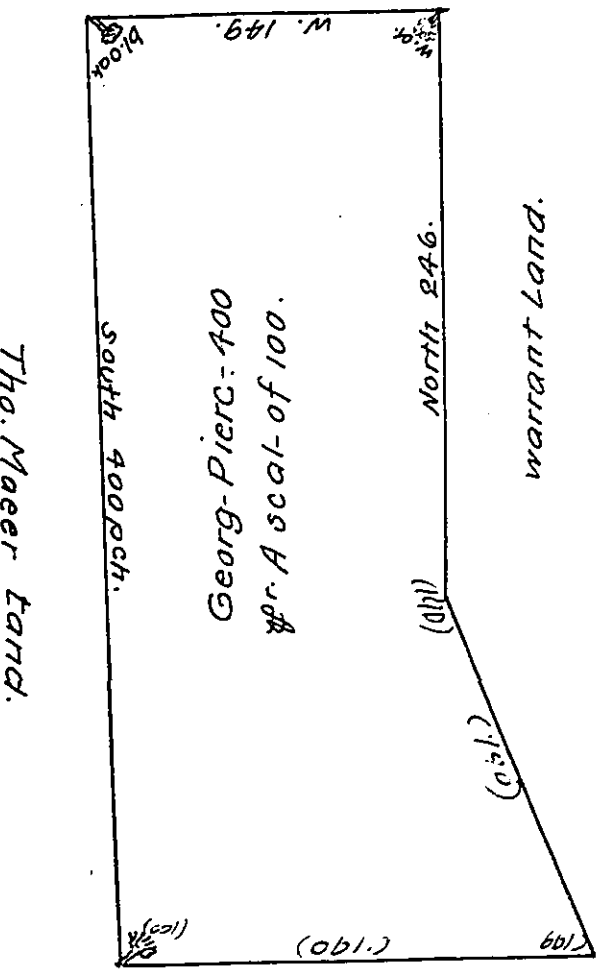


WARRANT LAND



To Edward Pennington Survr. Genl.

By vertu of a warrant to me directed bearing date the 14 day of 10^{mo} 1700~
 I have surveyed and laid out unto Georg. Pierc. A Tract of Land, situate on
 the South side of Brandewin Creek, beginning at A post standing at the Line of
 Georg and Michael Harlan's Land then by a line n n w 161 perch to a post
 being the Corner. Then North 246 P^{ch} to a bound whit oak then West 149 pch. to
 a bound black oak then South 400 pch. to a bounded post standing in ~~Christ~~
 Joseph
~~John~~ Pennocks line then by the sd line E s t 211 pch. to the place of begin-
 ing. Containing and laid out for 400 Acres of Land the 25 day of the 10th
 month.

W^m Henry Hollingsworth,

Dep^y Sur^r

IN TESTIMONY that the above is a copy of the original remaining on file in
 the Department of Internal Affairs of Pennsylvania, made
 conformably to an Act of Assembly approved the 16th day of
 February, 1833, I have hereunto set my Hand and caused
 the Seal of said Department to be affixed at Harrisburg,
 this twenty third day of August, 1909.

Henry H. ...
 Secretary Internal Affairs.